

SS60, SS72, SS84,  
SSB60, SSB72, SSB84

Manual # SS-08.01  
March 2008

**OPERATOR'S MANUAL**



## TABLE OF CONTENTS

Introduction, General Information, Serial Number.....	2
Owner and Operator and Safety Information.....	3-6
Definitions of Safety Terms and Symbols, Accident Prevention... 3	
Safety Instructions .....	4-5
Safety Signs.....	6
Power Unit Specifications.....	7
Attachment Specifications.....	7
Installation Instructions.....	7
Hydraulic Instructions.....	8
Operation.....	8
Maintenance.....	9
Service.....	9
Grease Points.....	10
Belt Adjustments.....	11
Parts illustrations.....	12-15
Troubleshooting.....	16
Warranty Policy.....	17

**HORST WELDING**  
8082 Rd 129  
Listowel, ON N4W 3G8  
Canada  
1-866-567-4162  
sales@horstwelding.com  
www.horstwelding.com

## INTRODUCTION

Thank you for purchasing your new **HLA Side Discharge** Bucket! Your Side Discharge Bucket was carefully designed and manufactured to give you many years of dependable service. You or any other person, who will be assembling, operating, maintaining or working with this product, are required to read and completely understand the information and instructions contained in this manual. If anyone does not fully understand every part of this manual, please obtain further assistance by contacting the dealer from which this product was purchased or by contacting HLA at the telephone number or address listed on the previous page of this manual. Keep this manual available for reference whenever this product is being handled or used. Provide this manual to any new owners and/or operators.

This manual covers models: **SS60, SS72, SS84 (sawdust)**  
**SSB60, SSB72, SSB84 (sand)**

## GENERAL INFORMATION

The purpose of this manual is to assist you in safely assembling, mounting, operating and maintaining your Side Discharge Bucket. Read this manual carefully to obtain valuable information and instructions that will help you achieve safe and dependable service. The illustrations and data used in this manual were current at the time of printing, but due to possible engineering and/or production changes, this product may vary slightly in detail. HLA reserves the right to redesign and/or change components as necessary without notification.

Throughout this manual, references may be made to:


Power Unit	The engine-driven machine to which this product must be attached.
Right, Left, Front, Rear	Directions which are determined in relation to the operator of the equipment when seated in the normal operating position.
<b>IMPORTANT</b>	Precautions that must be followed to prevent damage to equipment.
<b>NOTICE</b>	Precautions that must be followed to prevent substandard performance.

## SERIAL NUMBER LOCATION

Always refer to the model and serial number when ordering parts or requesting information from your dealer. The serial number plate for this product is located on the upper right rear corner of your Side Discharge Bucket.

## DEFINITION OF SAFETY TERMS AND SYMBOLS

Throughout this manual, the terms **DANGER, WARNING and CAUTION** are used to indicate the degree of hazard to personnel if proper safety procedures are not followed. These words will be used in conjunction with the Safety Alert Symbol: a dark triangle containing a white exclamation mark.

	The Safety Alert Symbol means: <b>- ATTENTION!                      - BECOME ALERT!                      - YOUR SAFETY IS INVOLVED!</b>
<b>DANGER</b>	Indicates an imminently hazardous situation, which, if not avoided, <b>WILL result in death or serious injury.</b>
<b>WARNING</b>	Indicates a potentially hazardous situation, which, if not avoided, <b>Could result in death or serious injury.</b>
<b>CAUTION</b>	Indicates a potentially hazardous situation, which, if not avoided, <b>May result in minor or moderate injury;</b> <b>OR</b> May also be used to alert against unsafe practices, which <b>may result in damage to property.</b>

The safety information given in this manual does not replace any safety codes, insurance needs, federal, state and local laws.

### ACCIDENTS CAN BE PREVENTED WITH YOUR HELP!

The best safety device is a careful operator. HLA and your dealer ask that YOU be that careful, responsible equipment operator.

Pay attention to the job at hand. Do not let your mind lose concentration on what you are doing. No accident prevention program can be successful without the wholehearted cooperation of the person who is directly responsible for the operation of the equipment.

If accidents are to be prevented (*and accidents can be prevented*), that prevention will come from equipment operators who accept their complete responsibility and anticipate the results of their actions.

The designer, the manufacturer, and the safety engineer all help create a safe product, but their combined efforts can be wiped out with a single careless act by the operator of that product.

Do not attempt to operate this equipment under the influence of drugs or alcohol.

YOU ARE THE KEY TO SAFETY BECAUSE:

YOU are responsible for the SAFE operation and maintenance of YOUR Side Discharge Bucket.

YOU are responsible to familiarize yourself, and anyone else who will assemble, operate, maintain, or work around this product, with the safety information contained in this manual.

YOU are responsible to read ALL information contained in this manual to any operators or maintenance personnel who are not fully able to read the written English language. Whether YOU read the manual as written or translate it into another language, YOU must make certain that all operators and maintenance personnel have complete understanding of the full and exact contents of this manual.

YOU can reduce the risk of injury or death by following all safety precautions and by using good safety practices.

## SAFETY INSTRUCTIONS

### WORK SAFELY - A CAREFUL OPERATOR IS THE BEST INSURANCE AGAINST ACCIDENTS!!

#### **SECTION 1** **WARNING SECTION**



**WARNING**  
Obey all safety instructions listed in this section and throughout this manual. Failure to obey instructions in this section could result in death or serious injury.

BEFORE ATTEMPTING ANY TYPE OF ASSEMBLY, OPERATION, MAINTENANCE OR OTHER WORK ON OR NEAR THIS PRODUCT:

- **READ AND COMPLETELY UNDERSTAND THIS MANUAL.**
- **READ AND COMPLETELY UNDERSTAND THE MANUALS PROVIDED WITH YOUR POWER UNIT, LOADER AND QUICK-ATTACH.**
- Read and understand all safety signs on this product and on your power unit, loader and quick-attach.
- Know all your controls and know how to quickly stop all power unit movements, the bucket movement, and the engine in case of emergency.
- Know and obey all applicable government rules, O.S.H.A regulations, local laws and other professional guidelines for your operation.
- Make sure that anyone who will be assembling, mounting, maintaining, repairing, removing and/or storing this product:
  - Has been instructed in the safe operation of this product and of the power unit and the quick-attach to which this product is attached.
  - Is physically and mentally capable of the safe operation of this type of equipment.
  - Is not under the influence of drugs or alcohol.
  - Is carefully supervised from a safe distance, especially if such person is inexperienced.
  - Wears personal protective equipment (i.e. hardhat, safety glasses, work gloves, protective shoes, respirator, ear protection, etc.)
  - Does not wear loose fitting clothes, loose or uncovered hair or any accessories (jewelry, necktie, scarf, wrist watch, etc.) that can catch and entangle on moving parts.
  - Has annually reviewed all safety instructions.
- Know and follow good work practices when assembling, mounting, maintaining, repairing, removing and storing this product:
  - Work on a level surface in a well lit area.
  - Keep the area clean and dry.
  - Use properly grounded electrical outlets and tools.

- Use the right tool for the job at hand.
- Make sure that your tools are in good condition for performing the desired function.
- When using tools, wear the protective equipment specified by the tool manufacturer (i.e. hardhat, safety glasses, work gloves, protective shoes, etc.).

WHEN YOUR POWER UNIT IS USED DURING ANY TYPE OF ASSEMBLY, OPERATION, MAINTENANCE OR OTHER WORK ON OR NEAR THIS PRODUCT:

- Before leaving the operator's station or before beginning any type of work on this product, lower this product to the ground, apply your power unit's parking brake, stop the engine, remove the starter key, wait for all moving parts to stop and then relieve all pressure in the hydraulic lines. *Refer to your power unit's operator's manual for instructions on how to relieve hydraulic pressure in lines.*
- Know your loader's safe lifting and operating capacity and the weight of this product. See the specifications in this manual for the weight of this product and refer to your power unit's and loader's operator's manuals for safe operating limits. Lift capacity may be reduced if using a quick-attach.
- Never allow anyone, except the operator, to be around the power unit or this product when either is in motion.
- Do not start up unless others are clear of the work area.
- Do not allow riders on this product or the power unit.
- Do not stand or climb on this product when raised.
- Do not place any part of your body under any part of this product unless this product is securely resting on adequate blocking or on the ground.
- Do not use blocking made of concrete blocks, logs, buckets, barrels or any other material that could suddenly collapse or shift positions. Do not use wood or steel blocking that shows any signs of material decay. Do not use wood blocking that is warped, twisted or tapered.
- Never operate controls from the ground. Operate the controls only from the operator's station.
- Never leave the equipment unattended with the engine running or with this product raised on the loader.
- Be aware of the added weight and width of this product. Reduce travel speeds accordingly, especially when traveling over rough ground.
- Keep this product close to the ground and under control when transporting.
- When transporting, be sure bucket does not block view of vehicle lights or road.

**SAFETY INSTRUCTIONS**  
**WORK SAFELY - A CAREFUL OPERATOR IS THE BEST INSURANCE AGAINST ACCIDENTS!!**

**WARNING SECTION [Continued]**



**WARNING**

**Obey all safety instructions listed in this section and throughout this manual. Failure to obey instructions in this section could result in death or serious injury.**

**WHEN DEALING WITH HYDRAULICS DURING ANY TYPE OF ASSEMBLY, OPERATION, MAINTENANCE OR OTHER WORK ON OR NEAR THIS PRODUCT:**

- Hydraulic fluid under pressure can penetrate the skin and cause serious injury or death. Hydraulic leaks under pressure may not be visible!
- If any fluid penetrates the skin, GET IMMEDIATE MEDICAL ATTENTION!!
- Wear safety glasses, protective clothing and use a sound piece of cardboard or wood when searching for hydraulic leaks. **DO NOT USE YOUR HANDS!**
- Before connecting or disconnecting hydraulic hoses, read your tractor or power unit's operator's manual for detailed instructions on connecting and disconnecting hydraulic attachments.
- Make certain that all parts meet the specifications for this product when installing or replacing hydraulic hoses or fittings.
- After connecting hydraulic lines:
  - Slowly and carefully raise the loader and cycle the rollback / dump cylinders to check hose clearances and to check for any interference.
  - Operate the hydraulics on this product to check hose clearances and to check for any interference.
  - Make certain that the hoses cannot interfere with or actuate the quick-attach mechanism.
  - Make certain that hoses will not be pinched, or get tangled, in any equipment.
- Do not lock the auxiliary hydraulics of your power unit in the "ON" position.
- Refer to your power unit's operator's manual and this manual for procedures and intervals, then inspect and maintain the entire hydraulic system to insure that the fluid remains clean, that all devices function properly and that there are no fluid leaks.

**WHEN MOUNTING THIS PRODUCT TO YOUR POWER UNIT:**

- Refer to the operator's manuals of your power unit, your loader and your quick-attach for special or detailed mounting instructions.

- This product should fit onto the quick-attach or loader arms of your power unit the same as the original products that were designed by your loader / quick-attach manufacturer.
- If this product does not fit properly, contact HLA before operating.
- Never place your finger into the mounting plate or 3-point hitch or loader holes. A slight movement of the power unit or this product could cause serious injury.

**BEFORE EACH USE, THOROUGHLY INSPECT THIS PRODUCT AND:**

- Make certain that all safety signs are in place and legible. Refer to the safety sign page in this manual for the placement of safety signs for this product.
- Replace all damaged or excessively worn parts and hardware only with genuine HLA parts or with properly rated fasteners, hydraulic hoses or fittings.
- Make certain that all locking pins, latches and connection devices are properly installed and secured.
- Make certain that all protective guards, canopies, doors, etc. are in place and secure.

**WHEN OPERATING THIS PRODUCT IN ACCORDANCE WITH DESIGN INTENTIONS:**

- Never use bucket on a power unit that is not equipped with a cab or ROPS, and operator restraints (seat belts or equivalent devices).
- Be careful when raising loaded bucket. Objects could fall from bucket toward bystanders or operator.
- Know your loader's safe operating weight limit and the weight of your loader attachment.

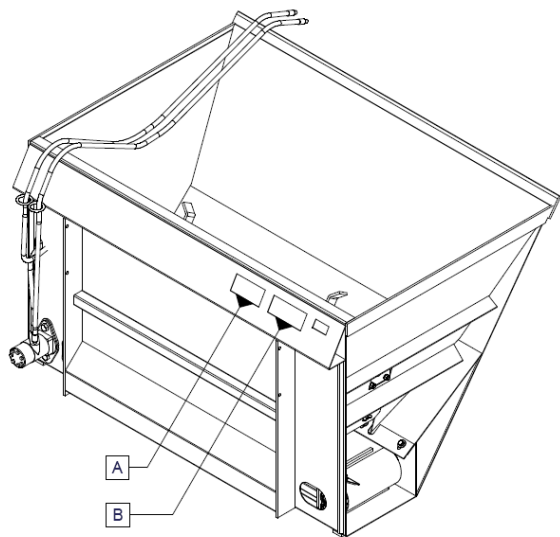
**WHEN ADJUSTING, SERVICING OR REPAIRING THIS PRODUCT:**

- Make no modifications to your bucket.
- When making repairs, use only genuine HLA parts or, for fasteners, hydraulic hoses or hydraulic fittings, use only properly rated parts.
- Replacement parts, for parts with safety signs attached, must also have safety sign attached.

**Think SAFETY!**

**Work SAFELY!**

## SAFETY SIGN LOCATIONS



### INSTRUCTIONS

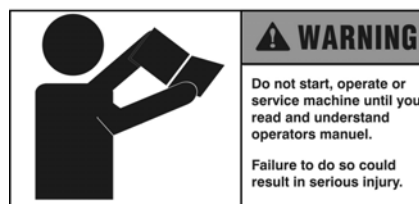
- Keep all safety signs clean and legible.
- Replace all missing, illegible or damaged safety signs.
- Replacement parts for parts with safety signs attached must also have safety signs attached.
- Safety signs are available free of charge from your dealer or from HLA.

ITEM	QTY	PART#	DESCRIPTION
A	1	SSW01	Manual Warning Decal
B	1	SSW02	Agitator Warning Decal

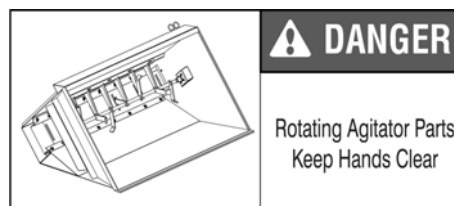
### PLACEMENT OR REPLACEMENT OF SAFETY SIGNS

1. Clean the area of application with non-flammable solvent, then, wash the same area with soap and water.
2. Allow the surface to fully dry.
3. Remove the backing from the safety sign, exposing the adhesive surface.
4. Apply the safety sign to the position shown in the diagram above and smooth out any bubbles.

#### Item A



#### Item B





## POWER UNIT SPECIFICATIONS

### IMPORTANT

Exceeding any of the recommended power unit specifications

- **CAN** result in damage to your power unit and/or this product and
- **WILL** void all HLA warranties.

LOADER DESCRIPTION	MAXIMUM BUCKET SIZE
LESS THAN 25 HORSEPOWER	DO NOT USE THIS PRODUCT
25 – 35 HORSEPOWER	60" BUCKET
35 – 45 HORSEPOWER	60"-72" BUCKET
45 OR GREATER HORSEPOWER	72"-84" BUCKET

## ATTACHMENT SPECIFICATIONS

PART #	NAME	INSIDE WIDTH (INCHES) FOR OUTSIDE WIDTH ADD 1 INCH	HEAPED CAP. CU.YD.	APPROX. WEIGHT(LBS.)
SS60	60" SIDE DISCHARGE - SAWDUST	60	1-2/3	910
SS72	72" SIDE DISCHARGE - SAWDUST	72	2	1080
SS84	84" SIDE DISCHARGE - SAWDUST	84	2-1/3	1250
SSB60	60" SIDE DISCHARGE - SAND	60	2/3	860
SSB72	72" SIDE DISCHARGE - SAND	72	1	1030
SSB84	84" SIDE DISCHARGE SAND	84	1-1/3	1250

## BUCKET INSTALLATION INSTRUCTIONS



**SAFETY FIRST!! READ AND UNDERSTAND THE SAFETY INSTRUCTIONS** (pages 3-6 of this manual) **BEFORE BEGINNING ANY BUCKET MOUNTING.**

1. Place this product on a firm, level surface that is large enough to safely accommodate this product, your power unit and all workers involved in the mounting process.
2. Be sure all connection points are properly secured.
3. Refer to the operator's manual(s) for your power unit, loader and quick-attach and follow the mounting instructions contained therein.
4. Carefully raise the loader arms and cycle the tilt cylinders to check clearances and to verify that all mounting procedures have been successfully completed.

## BUCKET HYDRAULIC CONNECTION



**SAFETY FIRST!! READ AND UNDERSTAND THE SAFETY INSTRUCTIONS** (pages 3-6 of this manual) **BEFORE BEGINNING ANY HYDRAULIC CONNECTION.**

1. Disconnect the hydraulic hose quick couplers from one another and attach the quick couplers to your power unit as per the instructions in your power unit's operator's manual.
2. Carefully raise the loader arm and cycle the tilt cylinders to check hose clearances and to check any interference.



### WARNING

**Do not lock the auxiliary hydraulics of your tractor or power unit in the "ON" position. Failure to obey this warning could result in death or serious injury.**

## BUCKET OPERATION



**SAFETY FIRST!! READ AND UNDERSTAND THE SAFETY INSTRUCTIONS** (pages 3-6 of this manual) **BEFORE BEGINNING ANY BUCKET OPERATION.**



### DANGER

**Failure to obey the following procedure will result in death or serious injury.**

- Avoid contacting overhead wires.



### WARNING

**Failure to obey the following procedures could result in death or serious injury. Never lift this product:**

- above the operator's eye level OR
- to a height where visibility is obstructed, whichever is lower.

**Use caution when raising loaded bucket. Objects could fall from bucket toward bystanders or operator.**

**NOTICE** Refer to your power unit's operator's manual for safe **operating limit** and use of **counterweights**.

### TO LOAD BUCKET:

1. When loading bucket, drive straight into material, with bucket floor level. Attempting to turn tractor while loading bucket can cause damage to both loader and tractor.
2. To best utilize bucket capacity, roll bucket back and at the same time lift the loader.

### TO DISCHARGE:

1. Position bucket so conveyer belt is level to floor.
2. Raise bucket to desired height and get positioned before engaging hydraulics.
3. Make sure bystanders are standing clear of discharge path as stray particles are a serious hazard.
4. It may be necessary to cycle tilt cylinder back and forth to prevent bridging in bucket during discharge.
5. Discharge "range" is controlled using engine RPM and lift height.
6. Discharge "rate" is controlled with a sliding gate on each end of bucket (adjust manually for desired rate).

### STORAGE:

- Clean out all excess material left in bucket after use.
- Wash out material build-up if storing in below freezing temperatures; or belt/drive will freeze up. (Access holes are provided on lower back of bucket for washing out belt rollers.)

Always lower the bucket to the ground; set the parking brake; stop the engine; remove ignition key and wait for all moving parts to stop before leaving the operator's seat.

## BUCKET MAINTENANCE

Regular maintenance is the key to long equipment life and safe operation. It is very important that these maintenance functions be performed as described below.



**SAFETY FIRST!! READ AND UNDERSTAND THE SAFETY INSTRUCTIONS** (pages 3-6 of this manual) **BEFORE BEGINNING ANY BUCKET MAINTENANCE OPERATION.**

### BEFORE FIRST USE

- Inspect the attachment for shipping damage. If damage does exist, do not operate until the damaged parts have been replaced or repaired.

### BEFORE EACH USE

- Make sure that all nuts and bolts are in place and properly tightened.
- Make sure that all other fasteners are in place and are performing their specified function.
- Make sure that all hydraulic fittings are tightened and that there are no leaks in any fittings or hoses.
- Make sure that all safety signs are in place, are clean and are legible.  
SEE THE SAFETY SIGN SECTION (page 6)
- Replace any damaged parts and excessively worn parts.
- Grease all (5) lubrication points. (refer to diagram on page 10)

### AFTER EVERY 8 HOURS OF OPERATION

- Grease all (5) lubrication points. (refer to diagram on page 10)

## BUCKET SERVICE



**SAFETY FIRST!! READ AND UNDERSTAND THE SAFETY INSTRUCTIONS** (pages 3-6 of this manual) **BEFORE BEGINNING ANY BUCKET SERVICE.**



### WARNING

**Hydraulic fluid under pressure can penetrate skin, resulting in serious injury or death. Always relieve hydraulic pressure before disconnecting lines.**

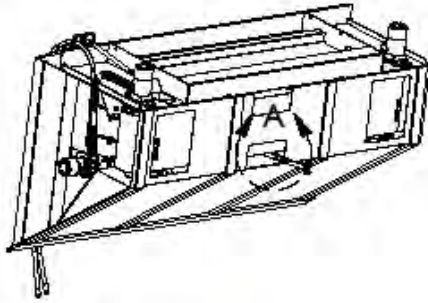
- Shut off engine, set parking brake and relieve hydraulic pressure before connecting or disconnecting hydraulic lines. Refer to your power unit's manual for instruction on how to relieve hydraulic pressure in lines.
- Before applying pressure to the system, be sure that all connections are tight and be sure there are no damaged hoses, lines or fittings.
- Wear safety glasses and use metal or wood when searching for leaks. Do not use your hands.



### WARNING

**Before servicing the loader, remove the attachment and make certain the lift arms are lowered to their lowest position or that the arms are supported by the mechanical lock up devices (if the machine is so equipped).**

- Steam-clean the power unit before any installation is made to the hydraulic system. Remove any attachment from the power unit and position on a level surface.



**Adjusting Belt Tension;**

- Push belt in to allow for wrench
- Loosen jam nuts
- Loosen or tighten tensioner bolts with 1 1/8" wrench or socket as shown, until desired belt tension is attained
- Tighten jam nuts when finished

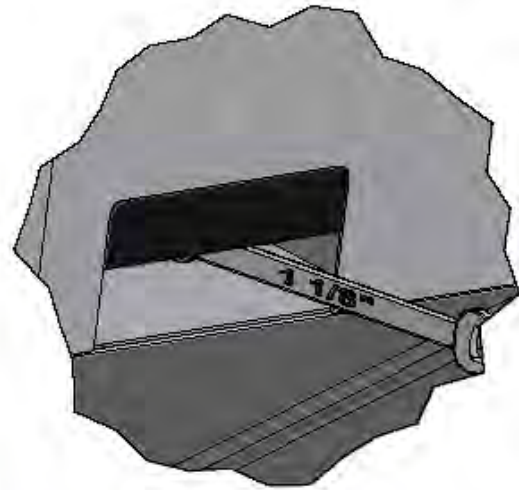
**Adjusting Belt Tracking;**

**PROBLEM** - Belt is tracking toward front or back;

**SOLUTION** - Tighten idler roller on side it wanders toward

**PROBLEM** - Tracking is opposite depending on direction of belt;

**SOLUTION** - Rollers must be aligned parallel using slotted holes in pillow block bearings  
(Loosen bearing mounting bolts for this adjustment)



**DETAIL A**  
**SCALE 1 / 4**

## TROUBLESHOOTING

PROBLEM	POSSIBLE CAUSE	SOLUTION
Hydraulic drive motors malfunctioning	Low hydraulic fluid level	Check and replenish hydraulic fluid.
	Improper hose hookup	Check and correct hydraulic hose connections.
	Broken hydraulic line	Check for leaks and replace line.
	Jammed agitator or belt	Remove interference.
	Quick disconnect coupler(s) are not connected or "Flow Check"	Check coupler connections. Replace coupler(s) if necessary.
	Hydraulic hose blockage	Check for evidence of damage to hoses that would block flow of oil between cylinders and control valve.
	Hydraulic fluid leaking past seals	Replace seals.
Belt operates in wrong direction relative to control valve lever position	Hydraulic hoses connected incorrectly	Correct hydraulic hose connections.
Aeration of hydraulic fluid <i>(generally indicated by foamy appearance of fluid).</i>	Low hydraulic fluid level	Check and refill hydraulic system to proper level.
	Hydraulic fluid foaming due to improper hydraulic oil usage	Refer to Power Unit's manual and replace hydraulic oil using recommended hydraulic oil.
Hydraulic oil heating	Dirty oil	Drain and refill oil, replace filter.
	Partially plugged inlet filter	Clean filter element.
	Oil too light in hot weather	Use recommended oil.
	Damaged oil lines	Replace oil lines.
External hydraulic fluid leakage	Motor seals damaged	Repair motor.
	Broken oil lines	Replace hose and check for leaks.
	Loose hydraulic connection	Tighten loose connections.
Hydraulic pump capacity inadequate	Cold hydraulic fluid	Allow hydraulic fluid to warm up to operating temperature.
	Engine R.P.M. too slow	Increase engine R.P.M.
	Low hydraulic fluid supply	Refer to Power Unit's manual for service recommendations.
	Hydraulic hose restriction	Check for evidence of restriction in hydraulic hoses.
Belt tracking off center	Adjustment is off	Refer to instructions on page 11
	Belt may be stretched or worn	Inspect and replace belt if necessary

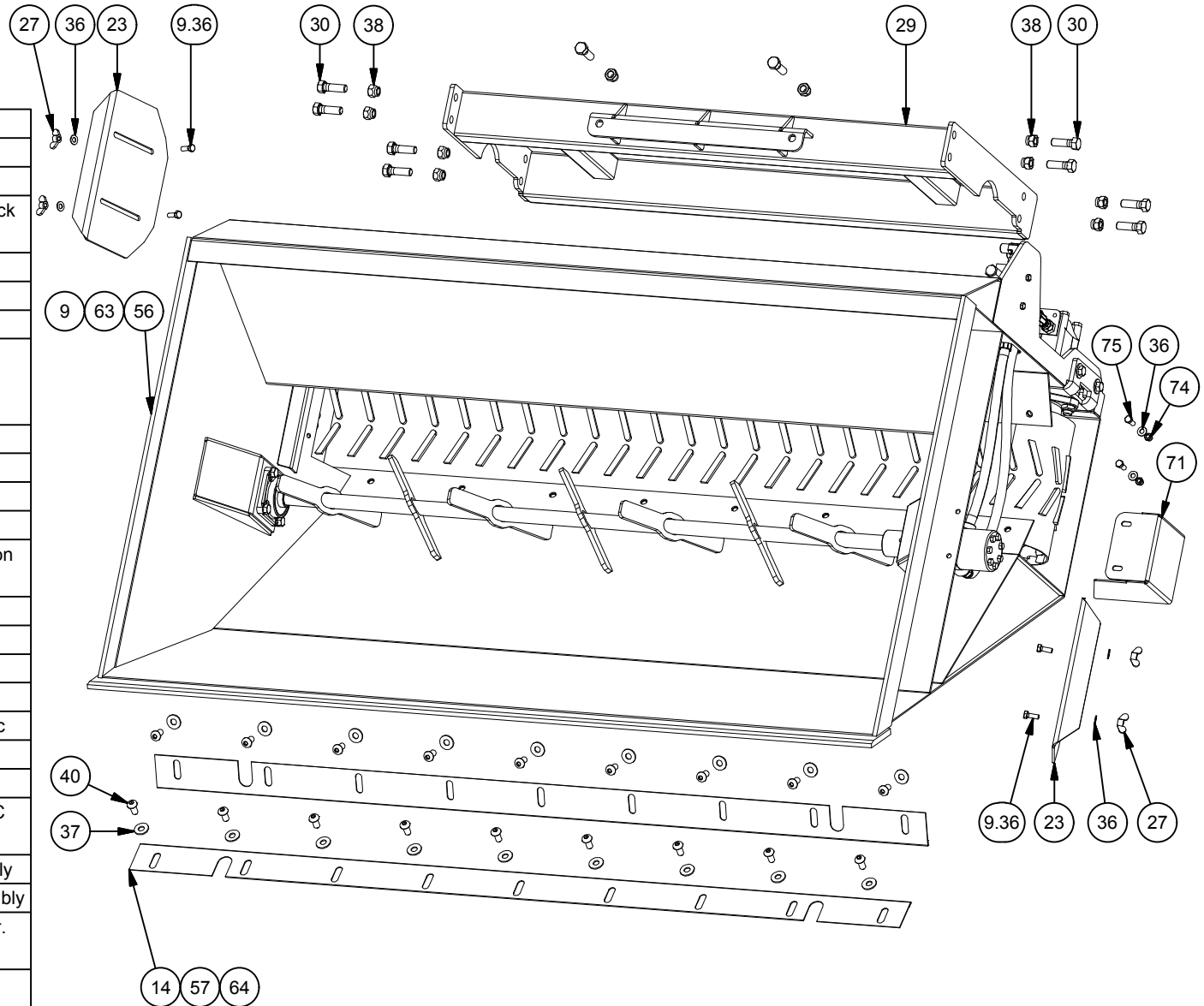
**Models**

- SSB60
- SSB72
- SSB84

# Side Discharge Bucket-(Sand Bucket)

## Components & Hardware

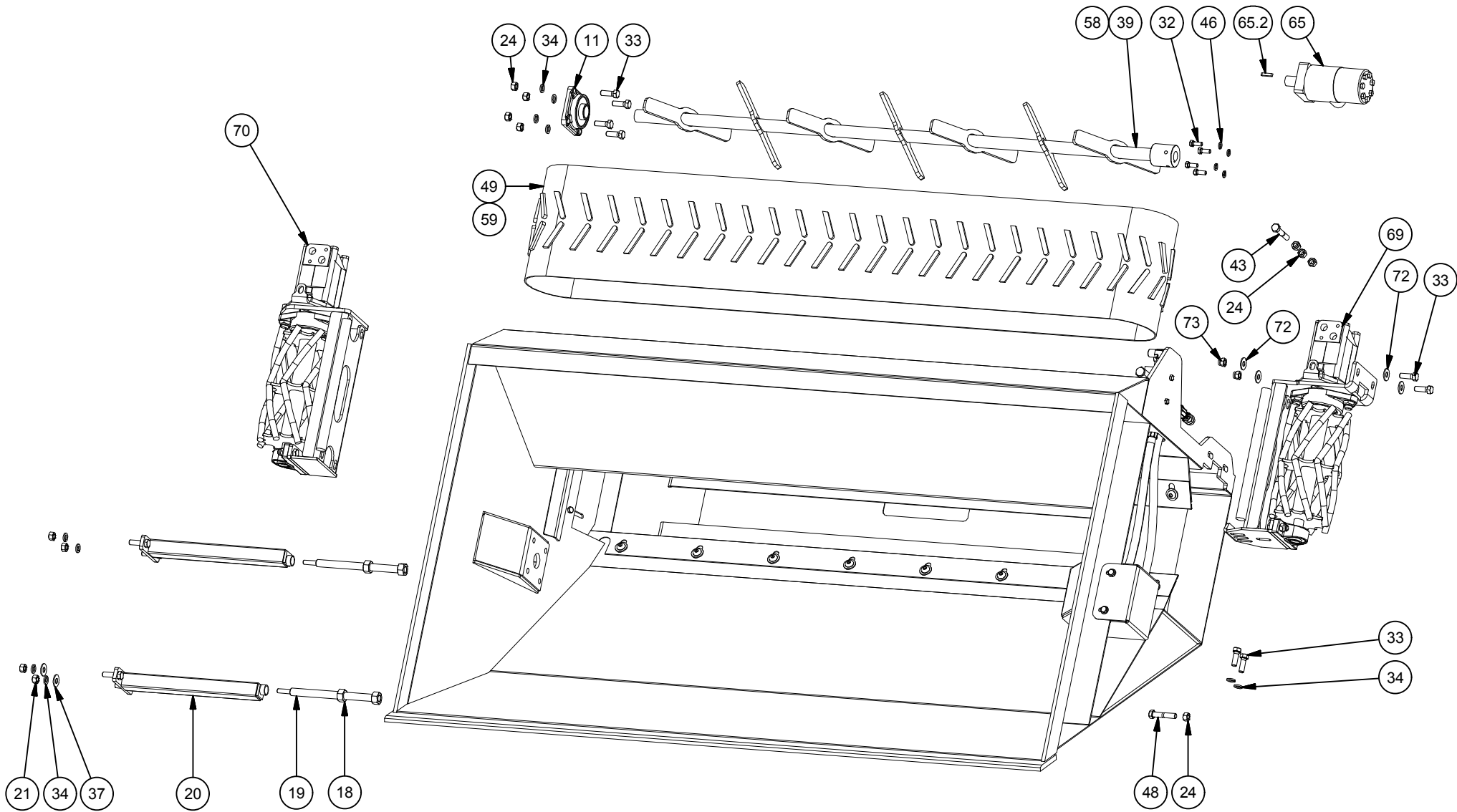
Parts List			
ITEM	QTY	PART NUMBER	DESCRIPTION
9	1	SS-2011	72in Assembly
9.36	4	11-1021	3/8" x 1" Bolt & Lock Washer
14	2	SS-2009	72in Belt Cover
23	2	SS-2006	Discharge Gate
27	4	SS-1012	3/8" Wing Nut
29	1	LP-101395(**Your Attachment**)	S&S Bolt-on Attachment Frame Assembly
30	10	11-1462	5/8" x 2" Hex Bolt
36	6	11-2077	3/8" Flat Washer
37	varies	11-1579	1/2" Flat Washer
38	10	11-1026	5/8" Lock Nut
40	varies	11-1845	1/2" x 1" Hex Button Head Cap Screw
56	1	SS-2044	84in Assembly
57	1	SS-2010	84in Belt Cover
63	1	SS-2012	60in Assembly
64	1	SS-2040	60in Belt Cover
65	1	11-2283	Beater Mtr. - 400cc
65.2	1	LP-101264	1/4" Key
67	2	11-2143	5/16-18 x 3 Bolt
68	1	11-2370	CRP420-110S-V-C Relief Valve
69	1		Left Drive Assembly
70	1		Right Drive Assembly
71	1	LP-101534	SNSDL Beater Mtr. Shield
72	4	11-1579	1/2" Large Flat Washer
73	2	11-2068	1/2" Lock Nut
74	2	11-1584	3/8" lock nut
75	2	11-1021	3/8" x 1" Bolt



**Models**  
-SSB72  
-SSB84

# Side Discharge Bucket-(Sand Bucket)

## Drive Components



**Models**  
 -SSB72  
 -SSB84

# Side Discharge Bucket-(Sand Bucket)

## Drive Components

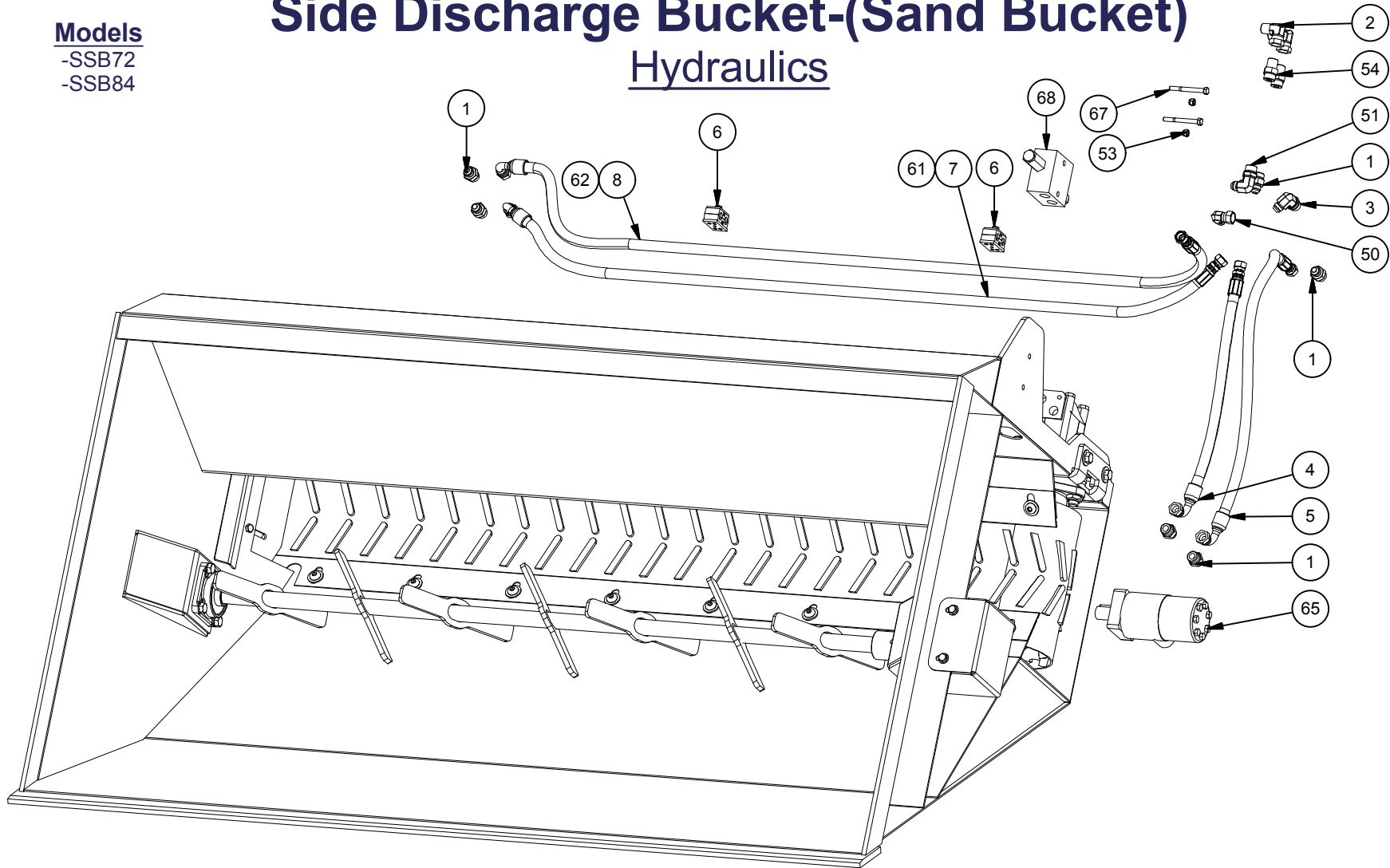
Parts List			
ITEM	QTY	PART NUMBER	DESCRIPTION
9.36	4	11-1021	3/8" x 1" Bolt & Lock Washer
11	1	11-2288	4 Bolt UCF207-20 (1.25 Shaft Dia.)
18	2	11-1839	3/4" Hex Nut
19	2	SS-2003	Tension Adjuster Threaded Rod
20	2	LP-101533	Belt Tensioner Bearing Mount Assembly (SN 148062 - )
21	4	SS-1003	1/2" Nut
24	9	11-2073	1/2" Zinc Jam Nut
32	5	11-1021	3/8" x 1" Bolt & Lock Washer
33	8	111802	1/2" x 1-1/2" Bolt & Lock Washer
34	10	LA-SS1002	1/2" Helical Spring Lock Washer
37	20	11-1579	1/2" Flat Washer
39	1	SS-2016	72in Sand Beater Assembly
43	1	11-2071	1/2" x 3" Bolt
46	5	11-2289	3/8" Lock Washer
48	1	11-1960	1/2" x 2 1/2" Bolt
49	1	11-1990	72in Sand Belt
58	1	SS-2045	84in Sand Beater Assembly
59	1	11-1991	84in Sand Belt
65	1	11-2283	Beater Mtr. - 400cc
65.2	1	LP-101264	1/4" Key
67	2	11-2143	5/16-18 x 3 Bolt
68	1	11-2370	CRP420-110S-V-C Relief Valve
69	1	see breakdown	Left Drive Assembly
70	1	see breakdown	Right Drive Assembly
71	1	LP-101534	SNDSL Beater Mtr. Shield
72	4	11-1579	1/2" Large Flat Washer
73	2	11-2068	1/2" Lock Nut
74	2	11-1584	3/8" lock nut
75	2	11-1021	3/8" x 1" Bolt



# Side Discharge Bucket-(Sand Bucket) Hydraulics

## Models

- SSB72
- SSB84



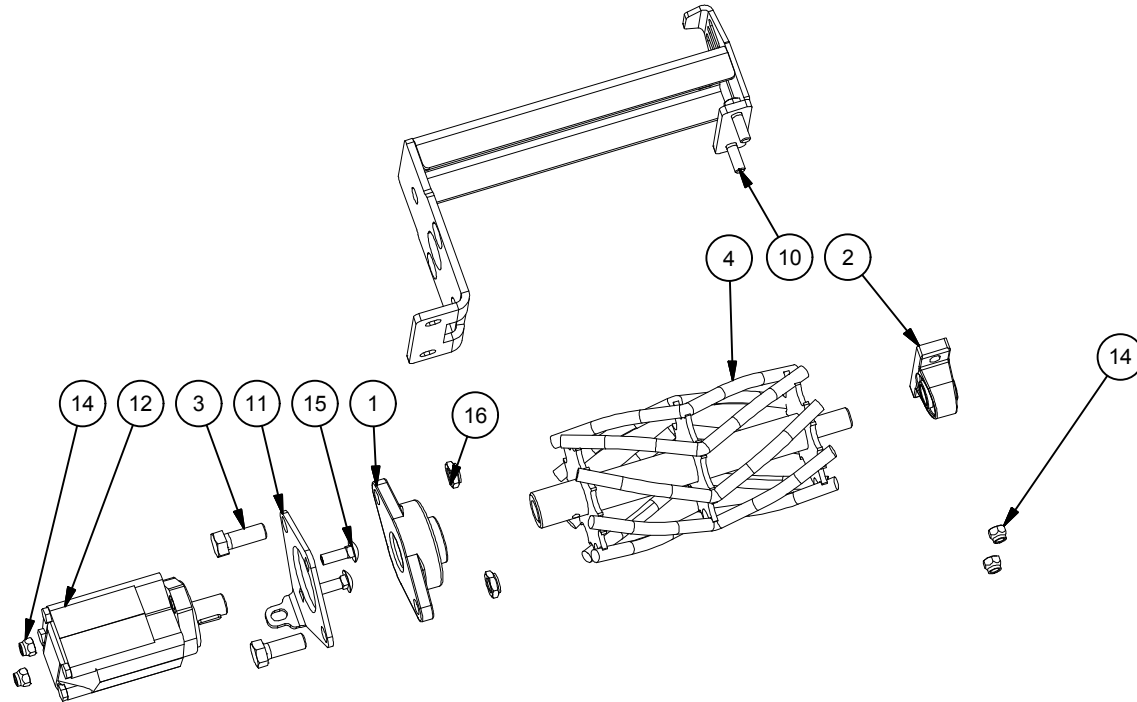
Parts List				Parts List			
ITEM	QTY	PART NUMBER	DESCRIPTION	ITEM	QTY	PART NUMBER	DESCRIPTION
1	6	HF-6400810	3/4"-16 M-JIC 7/8"-14 M-ORB	50	1	HF-6500-0808	JIC Swivel Elbow 90 8-8
2	2	HF-15010808	90° Elbow 1/2 M-NPT - 1/2 F-NPT Swivel	51	1	HF-68010810	90°M-JIC / M-ORB
3	1	HF-68010810	3/4"-16 90° M-JIC / 7/8"-14 M-ORB	53	2	11-2078	5/16" Lock Nut
4	1	HH100534	Sand Bucket Supply Hose SN 148062-	54	2	HF-64011008	5/8" MORB - 1/2" MNPT Adapter
5	1	HH100533	Sand Bucket Short Hose Assembly SN 148062-	61	1	HH100541	84" Sand Bucket Joiner Hose Assembly SN 148062-
6	2	HF-21818PP	Hose Clamp Assembly (3/4" OD Hose)	62	1	HH100542	84" Sand Bucket Return Hose Assembly SN 148062-
7	1	HH100530	72" Sand Bucket Joiner Hose Assembly SN 148062-	65	1	11-2283	Beater Mtr. - 400cc
8	1	HH100531	72" Sand Bucket Return Hose Assembly SN 148062-	67	2	11-2143	5/16-18 x 3 Bolt
9.36	4	11-1021	3/8" x 1" Bolt & Lock Washer	68	1	11-2370	CRP420-110S-V-C Relief Valve

**Models**

- SSB60
- SSB72
- SSB84

# Side Discharge Bucket

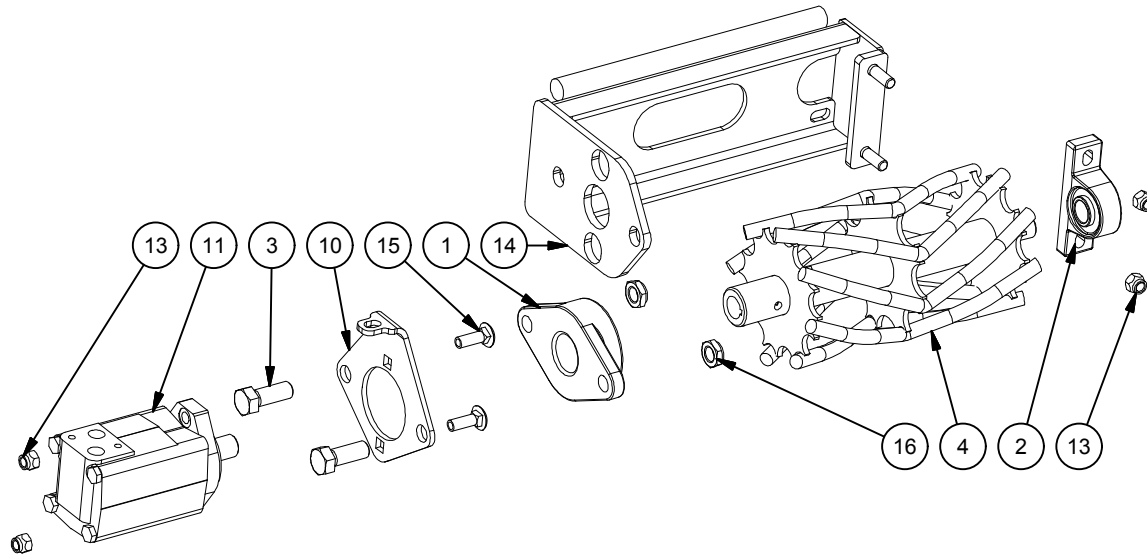
## Left Drive Assembly



Parts List			
ITEM	QTY	PART NUMBER	DESCRIPTION
1	1	11-2287	1 3/4" - 2 Bolt Flange Bearing
2	1	11-2286	1in Pillow Block Bearing
3	2	112280	3/4" x 2" Hex Bolt
4	1	SS-2014	Drive Roller
10	1	LP-101519	Left Drive Frame Assembly
11	1	LP-101520	Belt Motor Mount
12	1	HMMLHS80D4UD2B	M+S Hydraulic Motor MLHS80 w/ Taper Roller Bearings
14	4	11-2068	1/2" Lock Nut
15	2	11-1576	1/2 x 1-1/2 Carriage Bolt
16	2	11-2703	3/4" Thin Locking nut

**Models**  
 -SSB72  
 -SSB84

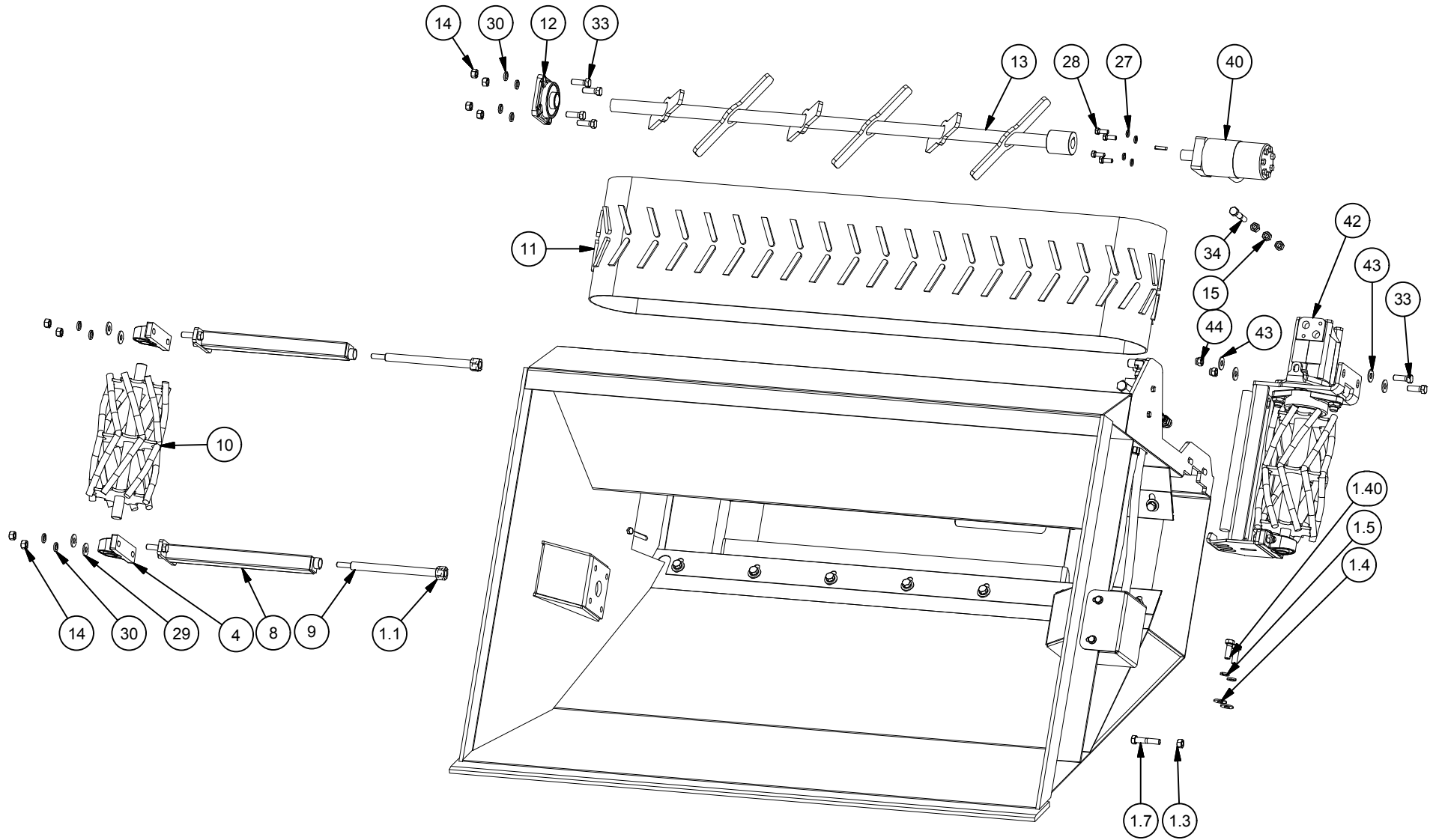
# Side Discharge Bucket Right Drive Assembly



Parts List				
ITEM	QTY	PART NUMBER	DESCRIPTION	
1	1	11-2287	1 3/4" - 2 Bolt Flange Bearing	
2	1	11-2286	1in Pillow Block Bearing	
3	2	112280	3/4" x 2" Hex Bolt	
4	1	SS-2014	Drive Roller	
10	1	LP-101520	Belt Motor Mount	
11	1	HMMLHS80D4UD2B	M+S Hydraulic Motor MLHS80 w/ Taper Roller Bearings	
13	4	11-2068	1/2" Lock Nut	
14	1	LP-101521	Right Drive Frame Assembly	
15	2	11-1576	1/2 x 1-1/2 Carriage Bolt	
16	2	11-2703	3/4" Thin Locking nut	

Models  
-SSB60

# Side Discharge Bucket-(Sand Bucket) Drive Components



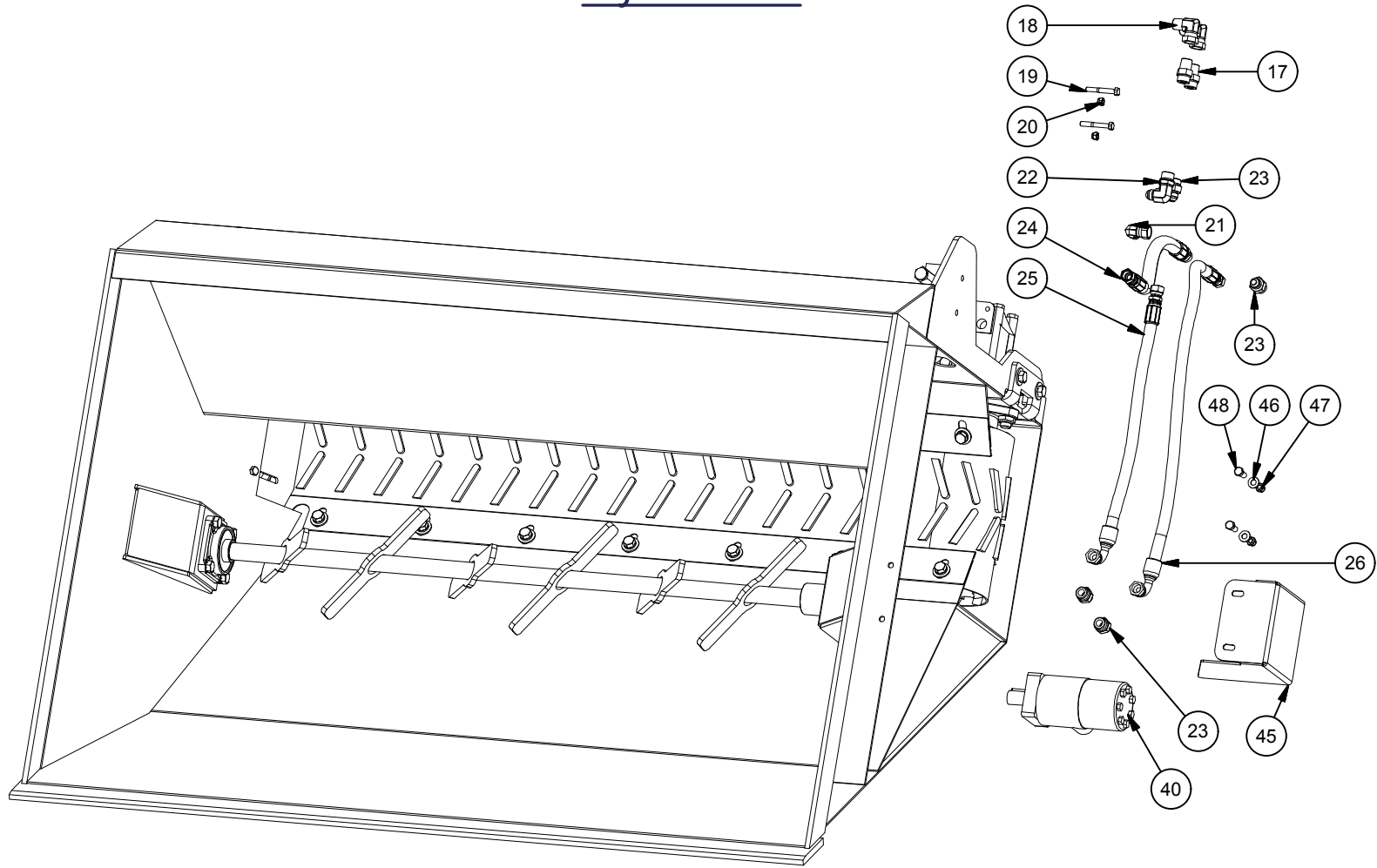
# Side Discharge Bucket-(Sand Bucket) Drive Components

Parts List			
ITEM	QTY	PART NUMBER	DESCRIPTION
1.1	4	11-1839	3/4" Hex Nut
1.3	18	11-2073	1/2" Zinc Jam Nut
1.4	2	11-1579	1/2" Flat Washer
1.5	2	LA-SS1002	1/2" Helical Spring Lock Washer
1.7	1	11-1960	1/2" x 2 1/2" Bolt
1.40	2	111802	1/2" x 1-1/2" Bolt & Lock Washer
4	2	11-2286	1in Pillow Block Bearing
8	2	LP-101533	Belt Tensioner Bearing Mount Assembly (SN 148062 - )
9	2	SS-2003	Tension Adjuster Threaded Rod
10	1	SS-2013	Idler Roller
11	1	11-1989	60in Sand Belt
12	1	11-2288	4 Bolt UCF207-20 (1.25 Shaft Dia.)
13	1	SS-2017	60in Sand Beater Assembly
14	8	11-2073	1/2" Zinc Jam Nut
15	3	11-1961	Hex Nuts (Inch Series) Hex Nut
27	4	11-2289	3/8" Lock Washer
28	4	11-1021	3/8" x 1" Bolt & Lock Washer
29	20	11-1579	1/2" Flat Washer
30	24	LA-SS1002	1/2" Helical Spring Lock Washer
33	6	111802	1/2" x 1-1/2" Bolt & Lock Washer
34	1	11-2071	1/2" x 3" Bolt
40	1	11-2283	Beater Mtr. - 400cc
42	1	see breakdown	Left Drive Assembly
43	4	11-1579	1/2" Large Flat Washer
44	2	11-2068	1/2" Lock Nut
45	1	LP-101534	SNDSL Beater Mtr. Shield
46	2	11-2077	3/8" Flat Washer
47	2	11-1584	3/8" lock nut
48	2	11-1021	3/8" x 1" Bolt

**Models**  
-SSB60

# Side Discharge Bucket-(Sand Bucket)

## Hydraulics



Parts List				Parts List			
ITEM	QTY	PART NUMBER	DESCRIPTION	ITEM	QTY	PART NUMBER	DESCRIPTION
17	2	HF-64011008	5/8" MORB - 1/2" MNPT Adapter	25	1	HH100527	60in Sand Bucket Supply Hose Assembly SN 148062-
18	2	HF-15010808	90° Elbow 1/2 M-NPT - 1/2 F-NPT Swivel	26	1	HH100526	60in Sand Bucket Short Hose Assembly SN 148062-
19	2	11-2079	5/16" x 2 1/4" Bolt	40	1	11-2283	Beater Mtr. - 400cc
20	2	11-2078	5/16" Lock Nut	45	1	LP-101534	SNDSL Beater Mtr. Shield
21	1	HF-6500-0808	JIC Swivel Elbow 90 8-8	46	2	11-2077	3/8" Flat Washer
22	1	HF-68010810	90°M-JIC / M-ORB	47	2	11-1584	3/8" lock nut
23	4	HF-64000810	3/4"-16 M-JIC 7/8"-14 M-ORB	48	2	11-1021	3/8" x 1" Bolt
24	1	HH100525	60in Sand Bucket Return Hose Assembly SN 148062-				

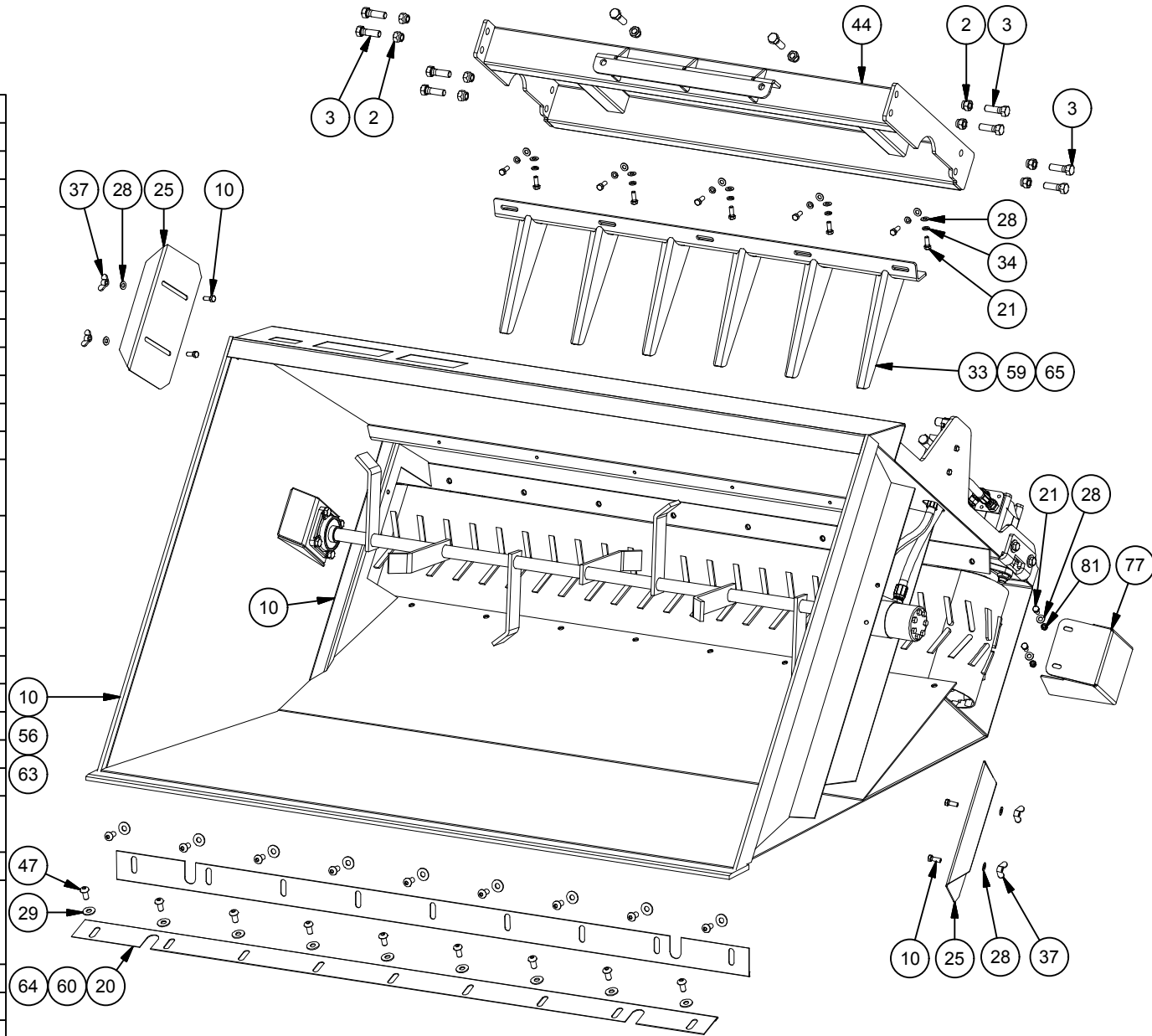
**Models**

- SS60
- SS72
- SS84

# Side Discharge Bucket-(Sawdust)

## Components & Hardware

Parts List			
ITEM	QTY	PART NUMBER	DESCRIPTION
2	10	11-1026	5/8" Lock Nut
3	10	11-1462	5/8" x 2" Hex Bolt
10	1	SS-2000	72in Bucket Assembly
20	2	SS-2009	72" Belt Cover
21	varies	11-1021	3/8" x 1" Bolt
25	2	SS-2006	SS Discharge Gate
28	varies	11-2077	3/8" Flat Washer
29	varies	11-1579	1/2" Flat Washer
33	1	SS-2033	72in Shield Assembly
34	varies	11-2289	3/8" Lock Washer
37	4	SS-1012	3/8" Wing Nut
44	1	LP-101395(***Your Attachment***)	S&S Bolt-on Attachment Frame Assembly
47	varies	11-1845	1/2" x 1" Hex Button Head Cap Screw
56	1	SS-2001	84in Bucket Assembly
59	1	SS-2034	84in Shield Assembly
60	1	SS-2010	84" Belt Cover
63	1	SS-2037	60in Bucket Assembly
64	1	SS-2040	60" Belt Cover
65	1	SS-2041	60" Shield Assembly
66	1	11-2283	Beater Mtr. - 400cc
66.2	1	LP-101264	1/4" Key
73	1	11-2370	CRP420-110S-V-C Relief Valve
75	1		Left Drive Assembly
75.12	1	HMMLHS80D4UD2B	M+S Hydraulic Motor MLHS80 w/ Taper Roller Bearings
76	1		Right Drive Assembly
77	1	LP-101532	SWDSL Beater Mtr. Shield
80	2	11-2143	5/16-18 x 3 Bolt
81	2	11-1584	3/8" lock nut



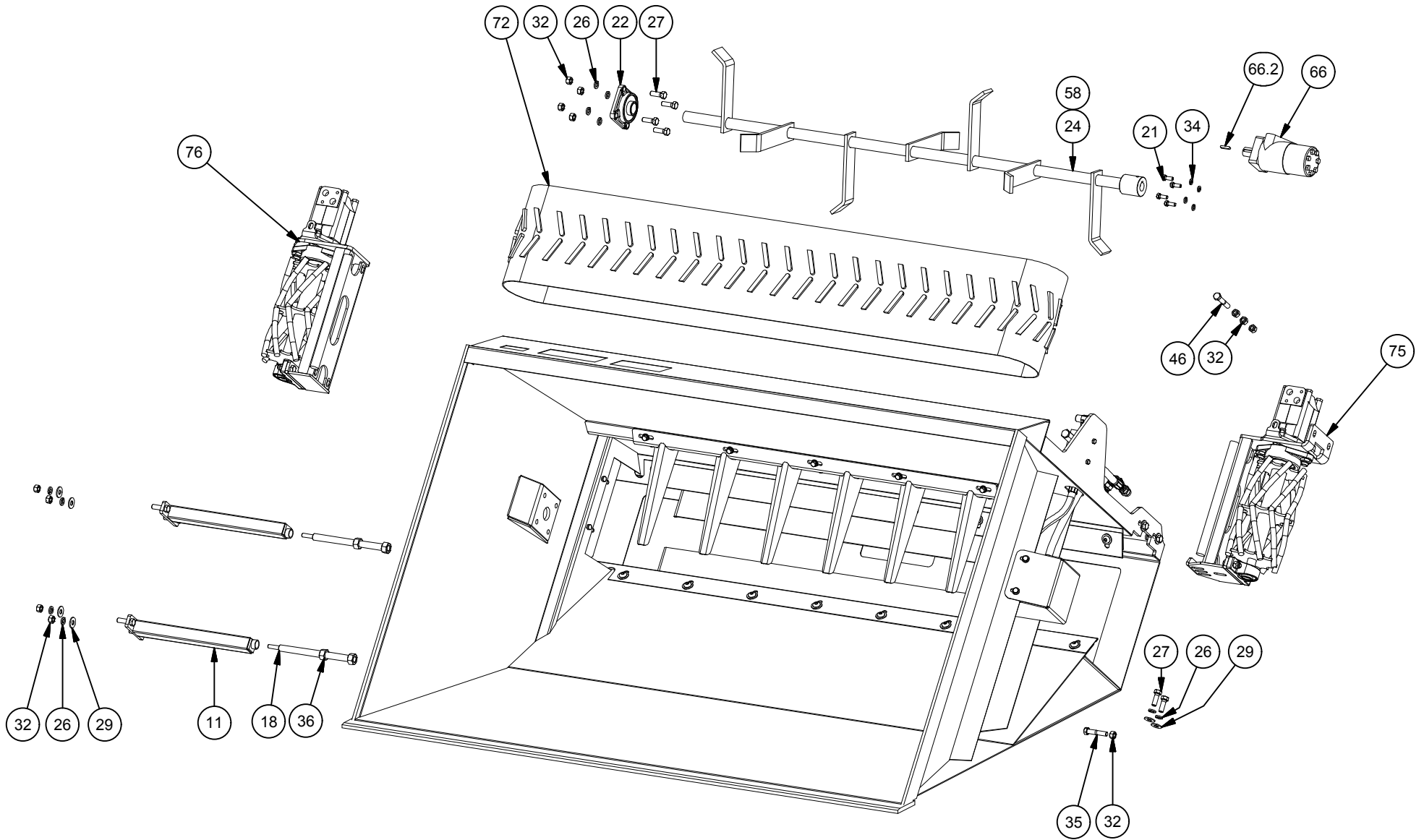
**Models**

-SS72

-SS84

# Side Discharge Bucket-(Sawdust)

## Drive Components





**Models**

-SS72

-SS84

# Side Discharge Bucket-(Sawdust)

## Drive Components

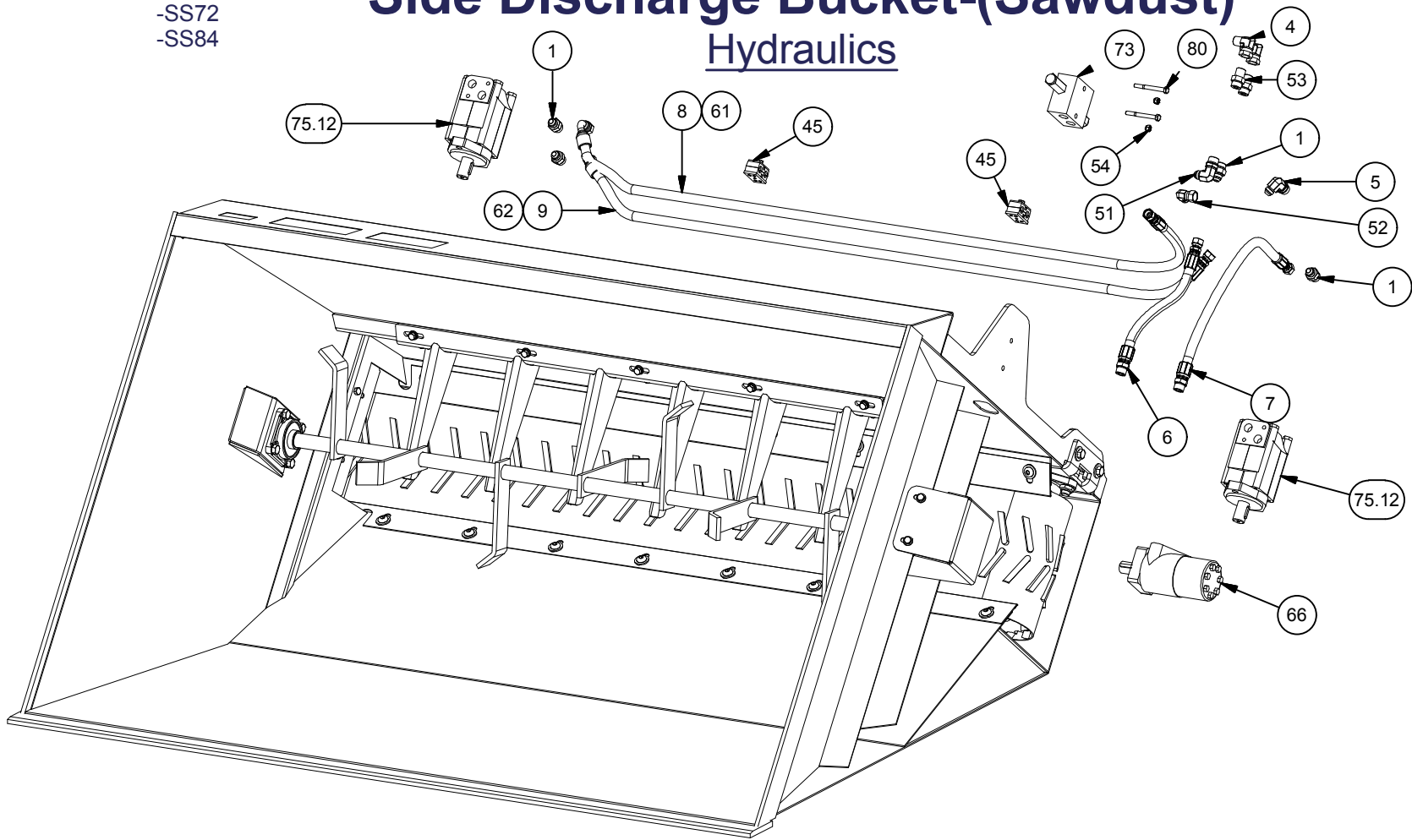
Parts List			
ITEM	QTY	PART NUMBER	DESCRIPTION
11	2	LP-101533	Belt Tensioner Bearing Mount Assembly (SN 148062 - )
18	2	SS-2003	Tension Adjuster Threaded Rod
21	16	11-1021	3/8" x 1" Bolt
22	1	11-2288	4 Bolt UCF207-20 (1.25 Shaft Dia.)
24	1	SS-2007	72in Beater Assembly
26	10	LA-SS1002	1/2" Helical Spring Lock Washer
27	8	111802	1/2" x 1-1/2" Bolt & Lock Washer
29	24	11-1579	1/2" Flat Washer
32	12	11-2073	1/2" Zinc Jam Nut
34	14	11-2289	3/8" Lock Washer
35	1	11-1960	1/2" x 2 1/2" Bolt
36	2	11-1839	3/4" Hex Nut
46	1	11-2071	1/2" x 3" Bolt
58	1	SS-2008	84in Beater Assembly
66	1	11-2283	Beater Mtr. - 400cc
66.2	1	LP-101264	1/4" Key
72	1	11-1990	72in Sand Belt
73	1	11-2370	CRP420-110S-V-C Relief Valve
75	1	see breakdown	Left Drive Assembly
76	1	see breakdown	Right Drive Assembly
77	1	LP-101532	SWDSL Beater Mtr. Shield
80	2	11-2143	5/16-18 x 3 Bolt
81	2	11-1584	3/8" lock nut

**Models**

-SS72  
-SS84

# Side Discharge Bucket-(Sawdust)

## Hydraulics



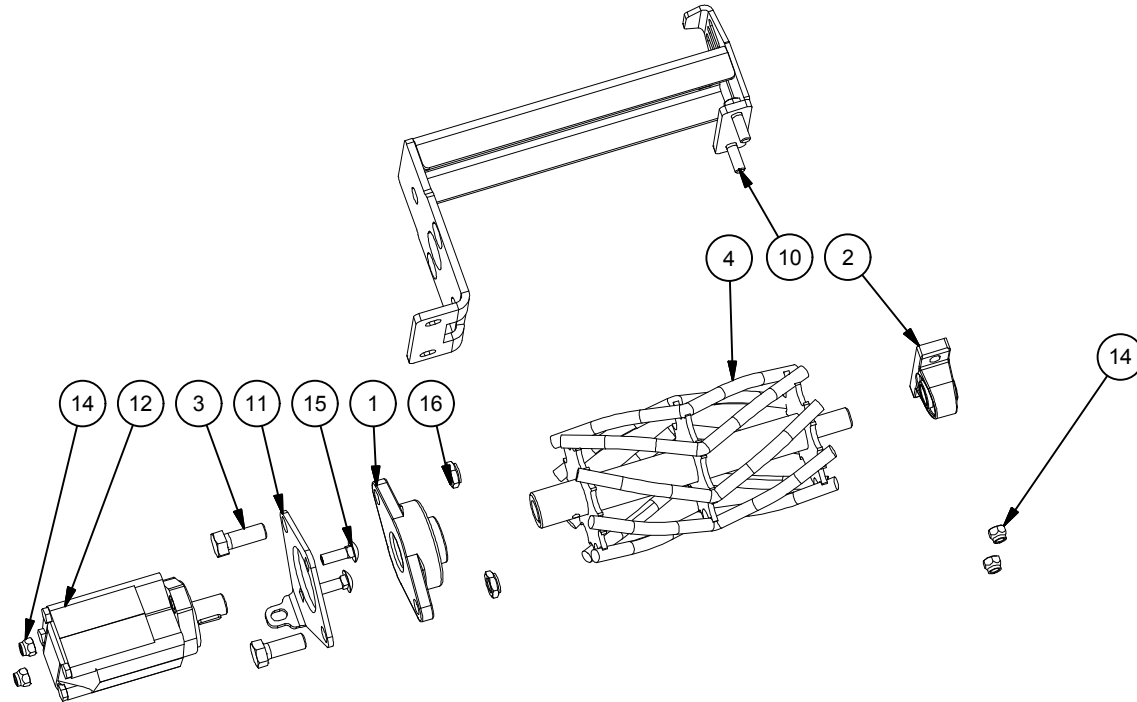
Parts List				Parts List			
ITEM	QTY	PART NUMBER	DESCRIPTION	ITEM	QTY	PART NUMBER	DESCRIPTION
1	4	HF-64000810	3/4"-16 M-JIC 7/8"-14 M-ORB	53	2	HF-64011008	5/8" MORB - 1/2" MNPT Adapter
4	2	HF-15010808	90° Elbow 1/2 M-NPT - 1/2 F-NPT Swivel	54	2	11-2078	5/16" Lock Nut
5	1	HF-68010810	3/4"-16 90° M-JIC / 7/8"-14 M-ORB	61	1	HH100539	84" Sawdust Bucket Joiner Hose Assembly SN 148062-
6	1	HH100538	Sawdust Bucket Supply Hose Assembly SN 148062-	62	1	HH100540	84" Sawdust Bucket Return Hose Assembly SN 148062-
7	1	HH100537	Sawdust Bucket Short Hose Assembly SN 148062-	66	1	11-2283	Beater Mtr. - 400cc
8	1	HH100536	72" Sawdust Bucket Return Hose Assembly SN 148062-	66.2	1	LP-101264	1/4" Key
9	1	HH100535	72" Sawdust Bucket Joiner Hose Assembly SN 148062-	73	1	11-2370	CRP420-110S-V-C Relief Valve
45	2	HF-21818PP	Hose Clamp Assembly (3/4" OD Hose)	75	1		Left Drive Assembly
51	1	HF-68010810	90°M-JIC / M-ORB	75.12	1	HMMLHS80D4UD2B	M+S Hydraulic Motor MLHS80 w/ Taper Roller Bearings
52	1	HF-6500-0808	JIC Swivel Elbow 90 8-8	80	2	11-2143	5/16-18 x 3 Bolt

**Models**

- SS60
- SS72
- SS84

# Side Discharge Bucket

## Left Drive Assembly

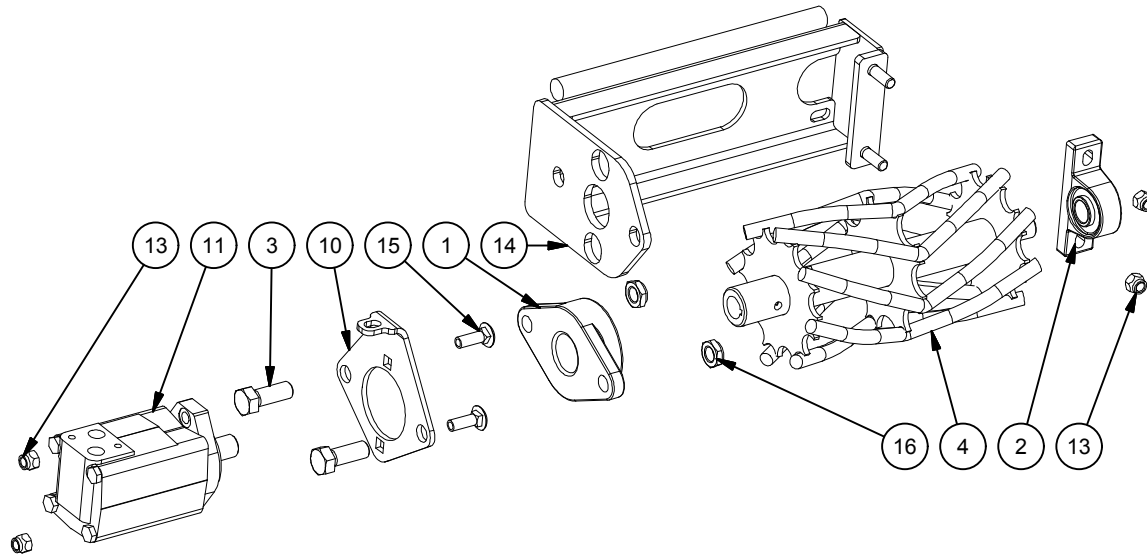


Parts List			
ITEM	QTY	PART NUMBER	DESCRIPTION
1	1	11-2287	1 3/4" - 2 Bolt Flange Bearing
2	1	11-2286	1in Pillow Block Bearing
3	2	112280	3/4" x 2" Hex Bolt
4	1	SS-2014	Drive Roller
10	1	LP-101519	Left Drive Frame Assembly
11	1	LP-101520	Belt Motor Mount
12	1	HMMLHS80D4UD2B	M+S Hydraulic Motor MLHS80 w/ Taper Roller Bearings
14	4	11-2068	1/2" Lock Nut
15	2	11-1576	1/2 x 1-1/2 Carriage Bolt
16	2	11-2703	3/4" Thin Locking nut

**Models**  
 -SS72  
 -SS84

# Side Discharge Bucket

## Right Drive Assembly

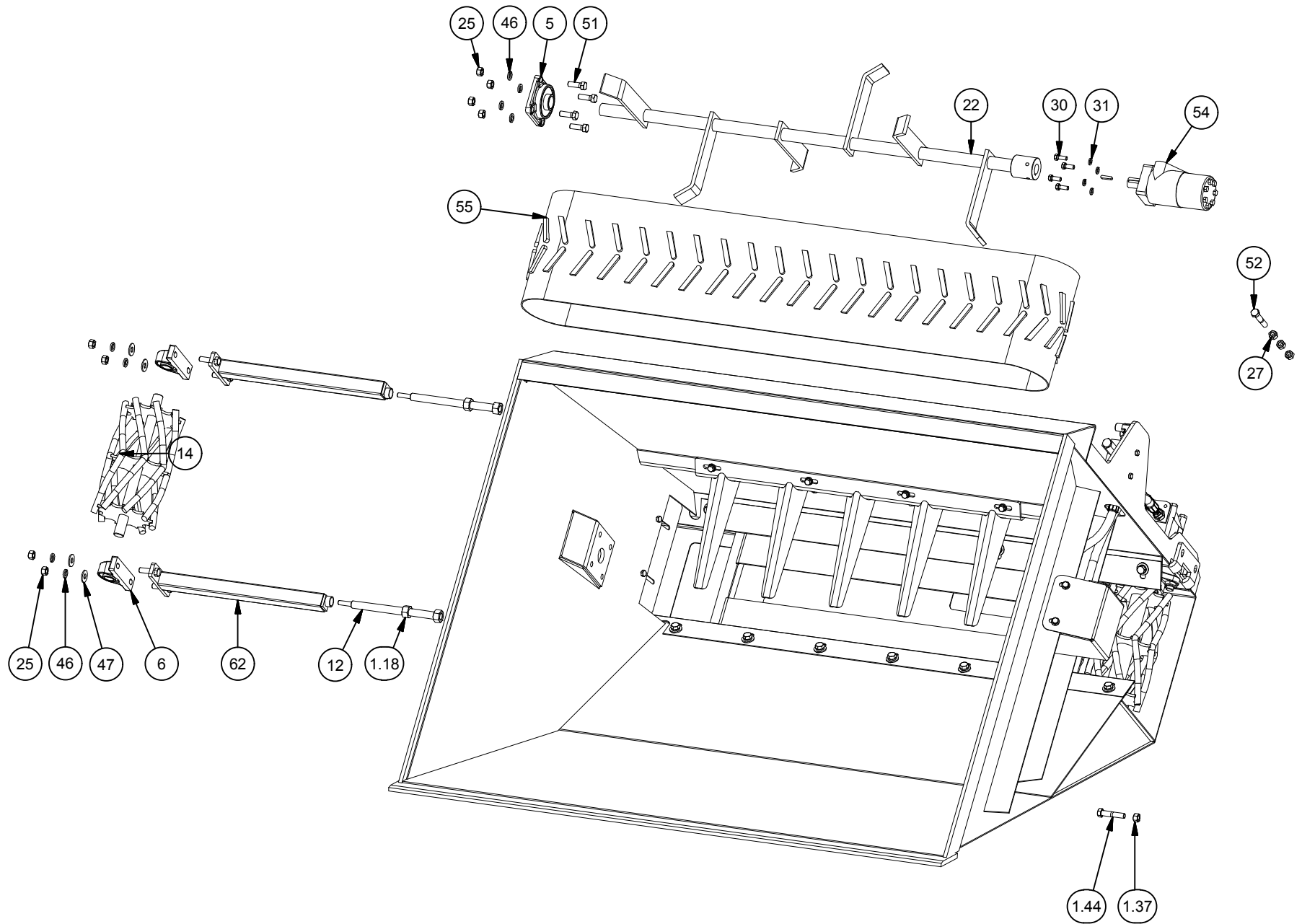


Parts List				
ITEM	QTY	PART NUMBER	DESCRIPTION	
1	1	11-2287	1 3/4" - 2 Bolt Flange Bearing	
2	1	11-2286	1in Pillow Block Bearing	
3	2	112280	3/4" x 2" Hex Bolt	
4	1	SS-2014	Drive Roller	
10	1	LP-101520	Belt Motor Mount	
11	1	HMMLHS80D4UD2B	M+S Hydraulic Motor MLHS80 w/ Taper Roller Bearings	
13	4	11-2068	1/2" Lock Nut	
14	1	LP-101521	Right Drive Frame Assembly	
15	2	11-1576	1/2 x 1-1/2 Carriage Bolt	
16	2	11-2703	3/4" Thin Locking nut	

**Models**  
-SS60

# Side Discharge Bucket-(Sawdust)

## Drive Components



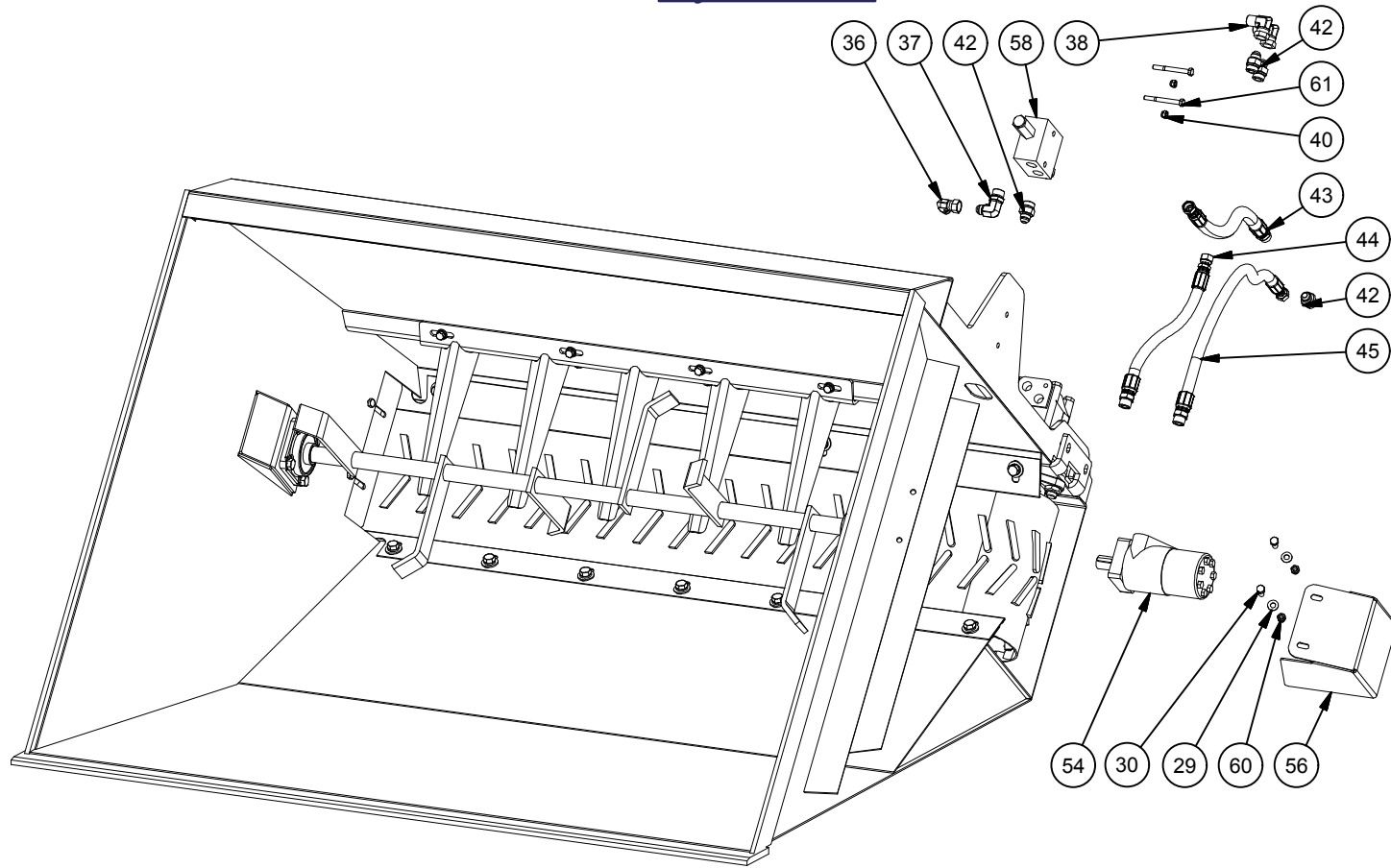
# Side Discharge Bucket-(Sawdust)

## Drive Components

Parts List			
ITEM	QTY	PART NUMBER	DESCRIPTION
1.18	4	11-1839	3/4" Hex Nut
1.37	18	11-2073	1/2" Zinc Jam Nut
1.44	1	11-1960	1/2" x 2 1/2" Bolt
5	1	11-2288	4 Bolt UCF207-20 (1.25 Shaft Dia.)
6	2	11-2286	1in Pillow Block Bearing
12	2	SS-2003	Tension Adjuster Threaded Rod
14	1	SS-2013	Idler Roller
22	1	SS-2039	60in Sawdust Beater
25	8	11-2073	1/2" Zinc Jam Nut
27	3	11-1961	Hex Nuts (Inch Series) Hex Nut
29	10	11-2077	3/8" Flat Washer
30	18	11-1021	3/8" x 1" Bolt
31	12	11-2289	3/8" Lock Washer
46	24	LA-SS1002	1/2" Helical Spring Lock Washer
47	20	11-1579	1/2" Flat Washer
51	4	111802	1/2" x 1-1/2" Bolt & Lock Washer
52	1	11-2071	1/2" x 3" Bolt
54	1	11-2283	Beater Mtr. - 400cc
55	1	11-1989	60in Sand Belt
61	2	11-2143	5/16-18 x 3 Bolt
62	2	SS-2002	Belt Tensioner Bearing Mount Assembly

Models  
-SS60

# Side Discharge Bucket-(Sawdust) Hydraulics



Parts List				Parts List			
ITEM	QTY	PART NUMBER	DESCRIPTION	ITEM	QTY	PART NUMBER	DESCRIPTION
29	10	11-2077	3/8" Flat Washer	44	1	HH100529	60in Sawdust Bucket Supply Hose Assembly SN 148062-
30	18	11-1021	3/8" x 1" Bolt	45	1	HH100528	60in Sawdust Bucket Short Hose Assembly SN 148062-
36	1	HF-6500-0808	JIC Swivel Elbow 90 8-8	54	1	11-2283	Beater Mtr. - 400cc
37	1	HF-68010810	90°M-JIC / M-ORB	56	1	LP-101532	SWDSL Beater Mtr. Shield
38	2	HF-15010808	90° Elbow 1/2 M-NPT - 1/2 F-NPT Swivel	58	1	11-2370	CRP420-110S-V-C Relief Valve
40	2	11-2078	5/16" Lock Nut	60	2	11-1584	3/8" lock nut
42	4	HF-64000810	3/4"-16 M-JIC 7/8"-14 M-ORB	61	2	11-2143	5/16-18 x 3 Bolt
43	1	HH100532	60in Sawdust Bucket Return Hose Assembly SN 148062-	62	2	SS-2002	Belt Tensioner Bearing Mount Assembly



## Horst Welding Warranty Policy

All equipment is sold subject to mutual agreement that it is warranted by the company to be free from defects of material and workmanship. But the company shall not be liable for special, indirect, or consequential damages of any kind under this contract or otherwise. The company's liability shall be limited exclusively to replacing or repairing without charge, at its factory or elsewhere, at its discretion, any material or workmanship defects that become apparent within one year from the date on which the equipment was purchased. The company shall have no liability for related damages of any kind. The buyer by the acceptance of the equipment will assume all liability for any damages that may result from the use or misuse by his employees or others.

Distributor/dealer must notify Horst Welding of the defect by phone, fax or email. Recommended repairs and cost are to be discussed with, and agreed on, by an authorized Horst Welding representative. Repair and labor (*at an agreed rate*) will be performed by a dealer for Horst Welding or a repair shop designated by Horst Welding.

All claims **must** be discussed with a representative of Horst Welding prior to any repairs or warranty will be **void**.

All claims must be accompanied by a photograph of the defective product.

All defective products must be returned to Horst Welding in Listowel, Ontario unless directed otherwise by a representative of Horst Welding.

### **Horst Welding Warranty will not apply to:**

- Product that in the judgment of Horst Welding has been misused by the user.
- Product not sold or manufactured by Horst Welding.
- Alterations or repairs not authorized by a representative of Horst Welding.